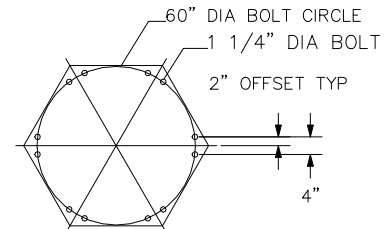


REINFORCING RODS:  
 5/8"φ ON TOP, 3/4"φ ON BOTTOM,  
 LOCATED 12" ON CENTER



12 BOLT  
 BASE BOLT PATTERN  
 1 1/4" BASE PLATE THICKNESS AT ANCHOR BOLT  
 VIEW A-A  
 NOT TO SCALE

CREATED BY: HOOSIER CRANE SERVICE

**CONFIDENTIAL**

**GORBEL**

600 FISHERS RUN  
 P.O. BOX 593  
 FISHERS, NY 14453-0593

MODEL NO.: FS300-30-W24

CAPACITY: 5.000 TON  
 SPAN: 18'-0"  
 H.U.B.: 12'-0"

QUANTITY: 1  
 SHIPPING WT.: 6905 LBS

DRAWN: lauyod      DATE: DEC 30, 2014

C.O.#: test      P/N: test.1A

- NOTES:
- 1) JIB CRANE FOUNDATION REQUIREMENTS ARE BASED ON A SOIL PRESSURE OF 2500 LBS PER SQUARE FOOT. CONCRETE RECOMMENDED FOR JIB CRANE FOUNDATION IS 3000 LBS PER SQUARE INCH OF COMPRESSIVE FORCE.
  - 2) DO NOT SCALE FROM THIS DRAWING.
  - 3) OVERALL HEIGHT = 14'-0 1/8"